

Series ETR Automatic Truck Restraint

**Quality
Truck
Restraints**

**Long
Lasting**

**Easy to
Install
and
Operate**

Safe

■ **DEPENDABLE, AFFORDABLE SAFETY THAT'S EASY TO INSTALL.**

CHALFANT ETR TRUCK RESTRAINT makes automatic dock safety affordable and easy. With just the push of a button, the ETR provides in excess of 50,000 lbs. of holding strength for additional safety against unexpected truck movement. The unit's operating system is completely self-contained within a heavy-duty steel console for protection from dock debris, the elements, and accidental damage. The ETR works without scheduled adjustments or risky manual effort by the operator. periodic lubrication is the only maintenance necessary!

■ **Warranty**

CHALFANT offers a One (1) year Warranty against manufacturing defects in material & workmanship from date of installation. *Excludes any failure caused by improper application, improper installation, damage caused by damaged trucks or trailers, overloading, abuse or negligence, are not covered by warranty.



AUTOMATIC RESTRAINT

**More than 50,000 lbs of
Restraining Force!**

12" - 30" Operating Range

.25 hp. Motor, 1 ph., 115V



**Automatic Push-button
Control** allows for easy operation.



Fully Enclosed Motor requires no assembly. Unit installs in approximately 1 hour!



**Complete Visual
Communication Package** includes inside/outside signage for enhanced safety at the dock.

Series ETR Automatic Truck Restraint

ALL CHALFANT Truck Restraints meet 1998 ICC regulations .

Durability

- **Bolt-hole Pattern Design** provides optimal holding force.
- **Non-impact Operation** meets 1998 ICC regulations.
- Fully automatic unit provides **Restraining Force in excess of 50,000 lbs.**

Easy Installation

- Installs in approximately 1 hour.
- Mounts directly to face of new or existing dock using **8 anchor bolts and 2 ground anchors.**
- **Recommended Factory Consultation** available for dock heights of less than 48" or 24" deep pits.
- **Optional Factory Provided Block-out** available for bumper projections greater than 4" (including Edge-of-Dock Levelers).
- **Optional Steel Mounting Plate** for new construction and **Template for Pre-mounting Attachment Bolts.**

Simple Operation

- Fully automatic unit provides reliable operation with simple, **Push-button Control.**
- **Low-profile Restraint Housing** height and mounted location do not restrict access to dock by smaller vehicles such as UPS trucks, delivery vans, or pick-up trucks.

Safety

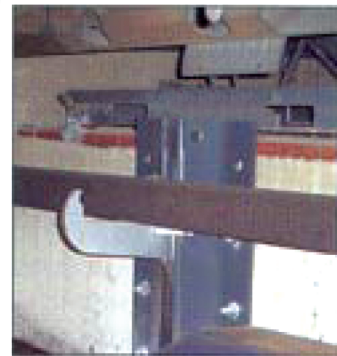
- **Hook** captures and holds all legal ICC Bars. **Positive Hold Feature** maintains ICC bar contact with hook while allowing free float with vertical truck movement.
- **Automatic Restraint Hook** is released and retracted effortlessly by dock attendant with just the touch of a button.
- The ETR **Communication System** includes inside/outside **Traffic Light Signals** and **Driver Warning Signs.**
- **Fully Enclosed Operating System** guards against physical and electrical overload.
- **Automatic Warning Alarm** sounds if the hook does not capture the ICC Bar.

Note: When Pit Leveler lip length exceeds 18" or Pit depth exceeds 20" notify factory.

Dealer Locations

CHALFANT Loading Dock Equipment is available nationwide. For the location of your nearest CHALFANT Dealer, call us at (216) 521-7922.

CHALFANT offers a complete line of finely crafted, technologically advanced loading dock equipment, including **Mechanical** and **Hydraulic Pit Levelers, Edge-of-Dock and Top- of-Dock Levelers, Portable Dock Boards, Vehicle Restraints, Dock Seals** and **Shelters**, plus other quality accessories. Just call us for personal, professional customer assistance and responses to all of your product needs.



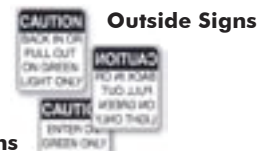
Positive Contact Hook captures and holds all legal ICC Bars.

Inside/outside **Automatic Light System** with safety signs.



Inside Signs

ETR **Communication System** includes inside/outside **Traffic Light Signals** and **Driver Warning Signs.**



Outside Signs

Authorized Dealer

Customer: _____
 Signature Approval By: _____
 Project: _____
 Address: _____
 City: _____ State: _____
 Architect/GC: _____