

Series 101 & 103 Curtain Dock Seal

Chalfant Series 101 & 103 Curtains provide a tight seal between your building and truck at your loading dock. Designed with the common variety of trucks in mind.

Standard Construction Features Summary

- Beveled side pads to provide tight seal against truck and prevent weather, dust, bugs, exhaust fumes from entering building.
- High resilient premium grade polyurthane foam, bonded with high quality liquid adhesive to kiln dried wood, all are encased inside the dock seal fabric cover to protect it from abuse and the elements (optional 14 gauge galvanized steel backing also available).
- All pads are equipped with air vents to help minimize rupture, and drain holes equipped with brass grommet type drain holes to reduce moisture build-up.
- Wide variety of tested high quality fabrics available.
- One (1) year Guarantee against manufacturing defects in material & workmanship from date of installation. *(see warranty)

3-in-1 Guardian Dor-Seal System Options

- Patented anti-theft protection - Added security.
- Foam backing - Conforms to building wall irregularities.
- Extra wood substructure - Strong, secure connections for installations.

General Options

- Flame-retardent fabric
- Door numbers on unit (specify in notes)
- Reinforce inside side pad wear face; 48" high 96" high
- Bottom draft flaps: 3" 6" Inside Front All
- Metal hood length: 10' 12'; Proj.: 14" 18" 24" 36"

Stock Model(s) Call For Availability

- Model 161 for door opening 8'0" x 10'0", 10" projection, color -black
- Model 161 for door opening 8'0" x 10'0", 20" projection, color -black.
- Model 163 for door opening 8'0" x 10'0", 10" projection, color -black.
- Model 163 for door opening 8'0" x 10'0", 20" projection, color -black.

Chalfant has pioneered, developed and provided the industry with quality loading dock equipment since 1940. Safe, affordable, reliable dock equipment, to meet your application needs.

Select Base And Unit Color

- | | | | | | | |
|--------------------------------------|--------------------------------------|--|--|---|---|--|
| <input type="checkbox"/> 22 oz Vinyl | <input type="checkbox"/> 40 oz Vinyl | <input type="checkbox"/> 16 oz Hypalon | <input type="checkbox"/> 40 oz Hypalon | <input type="checkbox"/> 16 oz Neoprene | <input type="checkbox"/> 40 oz Neoprene | <input type="checkbox"/> High-Tear Resistant Guardian 60 |
| <input type="checkbox"/> Black | <input type="checkbox"/> Black | <input type="checkbox"/> Black | <input type="checkbox"/> Black | <input type="checkbox"/> Black | <input type="checkbox"/> Black | <input type="checkbox"/> Black |
| <input type="checkbox"/> Blue | <input type="checkbox"/> Blue | <input type="checkbox"/> Blue | <input type="checkbox"/> Tan | | | |
| <input type="checkbox"/> Tan | <input type="checkbox"/> Tan | <input type="checkbox"/> Green | <input type="checkbox"/> Brown | | | |
| <input type="checkbox"/> Green | <input type="checkbox"/> Brown | <input type="checkbox"/> Brown | | | | |
| <input type="checkbox"/> Brown | | | | | | |

Note: Samples of materials are available upon request, consult Chalfant for other available colors.

Select Optional Contact Face

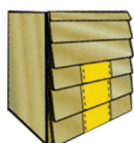
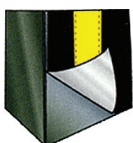
Wear Face

Guardian Face

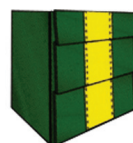
Guardian Pleat GP4

Guardian Pleat GP8

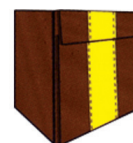
Guardian Pleat GP 16



For Heavy Use.
Exposure: 4"
Overlap: 5"
Total Length: 9"



For Medium Use.
Exposure: 8"
Overlap: 10"
Total Length: 18"



For Medium Use.
Exposure: 16.5"
Overlap: 1.5"
Total Length: 18"

Select Contact Fabric

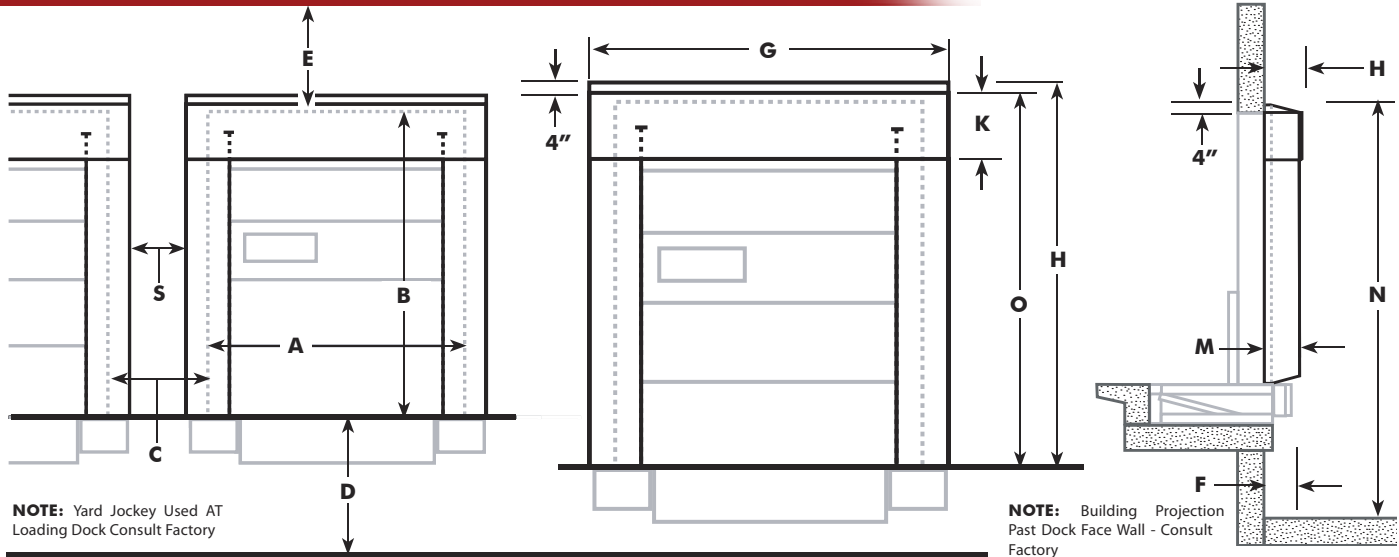
- 22 oz Vinyl
- 40 oz Vinyl
- 16 oz Hypalon
- 40 oz Hypalon
- 16 oz Neoprene
- 40 oz Neoprene
- High-Tear Resistant Guardian 60

Consistent with our policy of continuing product improvement, we reserve the right to change these specifications without notice or obligation.



Shown with optional full length guide stripe

Series 101 & 103 Curtain Dock Seal



General Information

Model _____ Color _____

Door Size: Width- **A** _____ Height- **B** _____

Number Of Units _____ Base Fabric _____

Contact Material _____ Contact Face Type _____

Color _____ Pleats On Head Curtain Corners

Inside Wear Face _____ Flame-Retardent Fabric

3 - 1: Anti-Theft Protection Foam Backing Extra Substructure

Guide Stripe: Yellow Orange Full Length Standard Length

Dock Height- **D** _____ Dock Bumper Projection _____

Plus Wall Set Back _____ Total- **F** _____

Approach: Level Drive Approach % of Decline _____

% of Incline _____

Distance Between Doors- **C** _____

Clearance Above Doors- **E** _____

Standard Seal Information

Side Pad Length- **O** _____ Distance Between Units- **S** _____

Bottom Projection of Unit- **M** _____ Top Projection of Unit- **H** _____

Bottom Draft Flaps: 3" 6" Inside Front All

Mounting - Total Offset (Add Both Sides Together) = _____

Front of Seal Opening: Width _____ Height _____

Overall Outside Unit Dimensions Width- **G** _____ Height- **L** _____

Total Height of Unit From Driveway- **N** _____

Drop Curtain Height- **K** _____

Velcro Series 101 Adjustable Drop Curtain With Pull Ropes Series 103

Foam Front Specify _____ Weighted Door Numbers _____

Truck Service Range

Min. Height _____ Max. Height _____

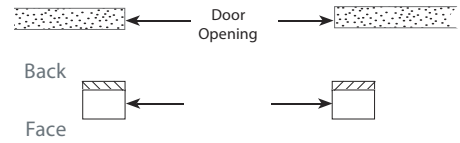
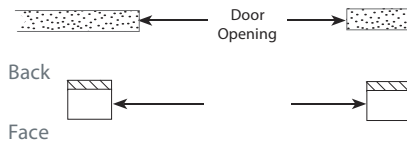
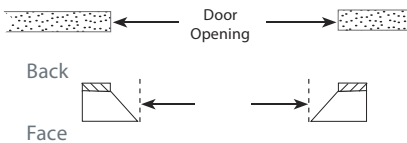
Min. Width _____ Max. Width _____

SPECIFY DOCK SEAL PAD TYPE & MOUNTING

Type A - Bevel Pad Flush Mount

Type B - Rectangular Pad, Off-Set Mount

Type C - Rectangular Pad, Flush Mount



SIDE PAD DIMENSIONS - Width of Face _____ Width of Back _____

Customer: _____

Signature Approval By: _____

Project: _____

Address: _____

City: _____ State: _____

Architect/GC: _____

Authorized Dealer