

### Series 200 & 205 Adjustable Dock Seal

**Chalfant Series 200 & 205 Adjustable Dock Seal** provides the best possible seal between the building and truck at your loading dock. Designed with the common variety of trucks in mind.

#### Standard Construction Features Summary

- Beveled side pads to provide tight seal against truck and prevent weather, dust, bugs, exhaust fumes from entering building.
- High resilient premium grade polyurthane foam, bonded with high quality liquid adhesive to kiln dried wood, all are encased inside the dock seal fabric cover to protect it from abuse and the elements (optional 14 gauge galvanized steel backing also available).
- All pads are equipped with air vents to help minimize rupture, and drain holes equipped with brass grommet type drain holes to reduce moisture build-up.
- Adjustable head pad accomodates wide range of trucks of varying heights.
- 18" Metal back head pad is counterbalance by torsion spring & travels in tracks (Series 200) or by counterbalance weight & travel in tracks (Series 205).
- Wide variety of tested high quality fabrics available.
- One (1) year Guarantee against manufacturing defects in material & workmanship from date of installation.\* (see warranty)

#### 3-in-1 Guardian Dor-Seal System Options

- Patented anti-theft protection - Added security.
- Foam backing - Conforms to building wall irregularities.
- Extra wood substructure - Strong, secure connections for installations.

#### General Options

- Flame-retardent fabric
- Door numbers on unit (specify in notes)
- Reinforce inside side pad wear face;  48" high  96" high
- Bottom draft flaps:  3"  6"  Inside  Front  All
- Metal hood length:  10'  12'; Proj.:  14"  18"  24"  36"

**Chalfant has pioneered**, developed and provided the industry with quality loading dock equipment since 1940. Safe, affordable, reliable dock equipment, to meet your application needs.

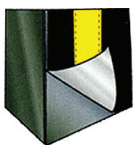
#### Select Base Fabric And Unit Color

- |                                      |                                      |  |  |   |   |  |
|--------------------------------------|--------------------------------------|--|--|---|---|--|
| <input type="checkbox"/> 22 oz Vinyl | <input type="checkbox"/> 40 oz Vinyl | <input type="checkbox"/> 16 oz Hypalon | <input type="checkbox"/> 40 oz Hypalon | <input type="checkbox"/> 16 oz Neoprene | <input type="checkbox"/> 40 oz Neoprene | <input type="checkbox"/> High-Tear Resistant Guardian 60 |
| <input type="checkbox"/> Black       | <input type="checkbox"/> Black       | <input type="checkbox"/> Black         | <input type="checkbox"/> Black         | <input type="checkbox"/> Black          | <input type="checkbox"/> Black          | <input type="checkbox"/> Black                           |
| <input type="checkbox"/> Blue        | <input type="checkbox"/> Blue        | <input type="checkbox"/> Blue          | <input type="checkbox"/> Tan           |   |   |  |
| <input type="checkbox"/> Tan         | <input type="checkbox"/> Tan         | <input type="checkbox"/> Green         | <input type="checkbox"/> Brown         |   |   |  |
| <input type="checkbox"/> Green       | <input type="checkbox"/> Brown       | <input type="checkbox"/> Brown         |  |   |   |  |
| <input type="checkbox"/> Brown       |                                      |  |  |   |   |  |

Note: Samples of materials are available upon request, consult Chalfant for other available colors.

#### Select Optional Contact Face

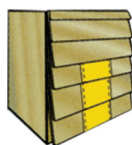
- Wear Face



- Guardian Face

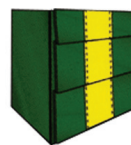


- Guardian Pleat GP4



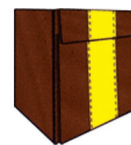
For Heavy Use.  
Exposure: 4"  
Overlap: 5"  
Total Length: 9"

- Guardian Pleat GP8



For Medium Use.  
Exposure: 8"  
Overlap: 10"  
Total Length: 18"

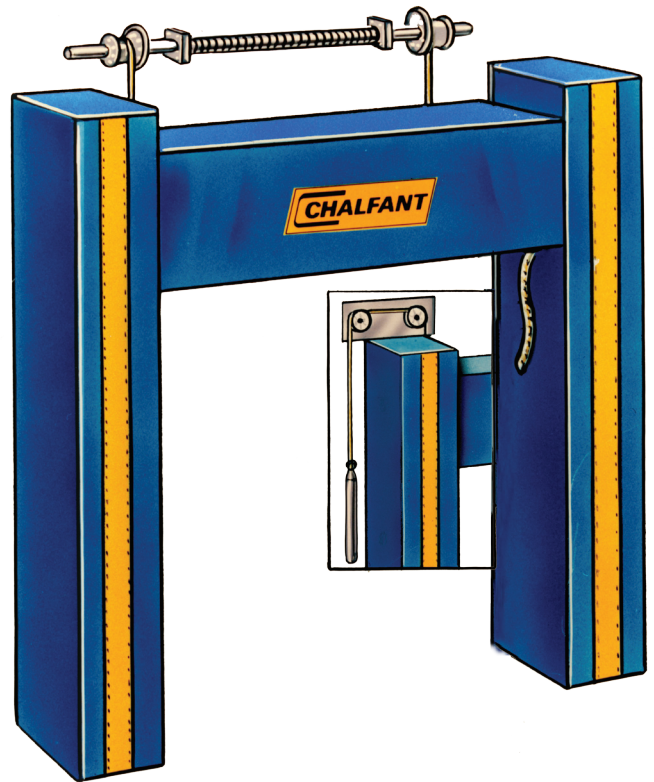
- Guardian Pleat GP 16



For Medium Use.  
Exposure: 16.5"  
Overlap: 1.5"  
Total Length: 18"

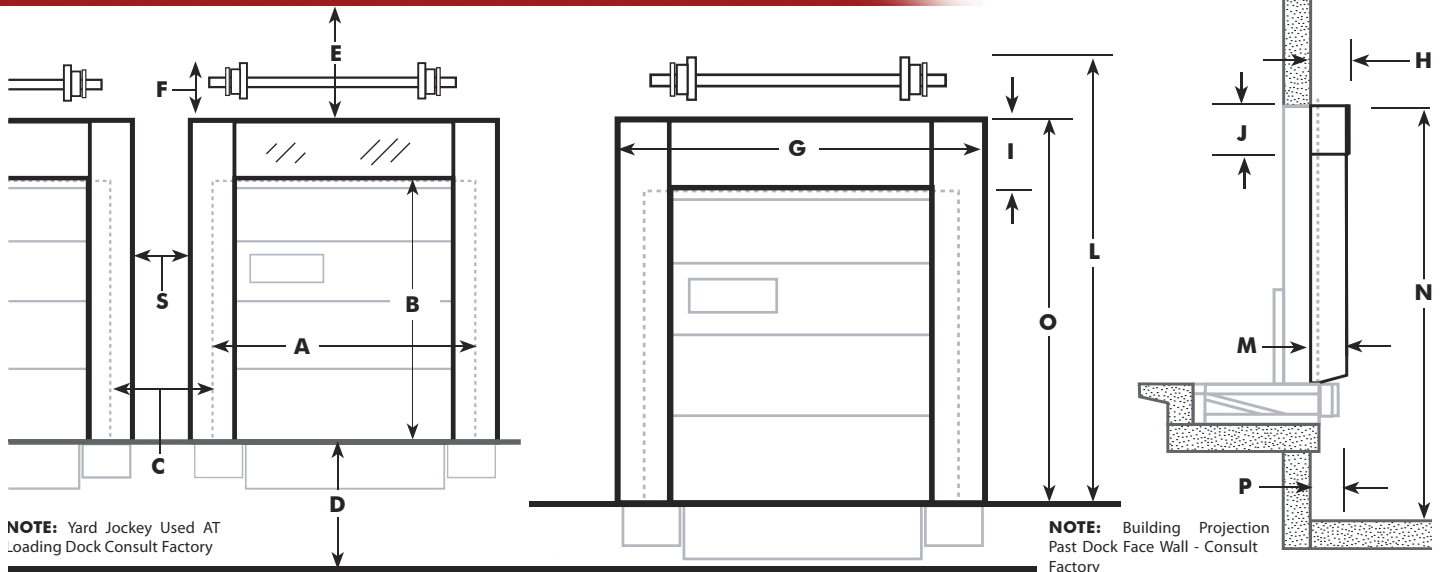
#### Select Contact Fabric

- 22 oz Vinyl
- 40 oz Vinyl
- 16 oz Hypalon
- 40 oz Hypalon
- 16 oz Neoprene
- 40 oz Neoprene
- High-Tear Resistant Guardian 60



Shown with optional full length guide stripe

### Series 200 & 205 Adjustable Dock Seal



#### General Information

Model \_\_\_\_\_ Color \_\_\_\_\_

Door Size: Width- **A** \_\_\_\_\_ Height- **B** \_\_\_\_\_

Number Of Units \_\_\_\_\_ Base Fabric \_\_\_\_\_

Contact Material \_\_\_\_\_ Contact Face Type \_\_\_\_\_

Inside Wear Face \_\_\_\_\_  Flame-Retardent Fabric

3-1:  Anti-Theft Protection  Foam Backing  Extra Substructure

Torsion-Spring Control  Double Counter Balance Control

Guardian Pleats On Head Pad Contact Face Type \_\_\_\_\_

Guide Stripe:  Yellow  Orange  Full Length  Standard Length

Dock Height- **D** \_\_\_\_\_ Dock Bumper Projection \_\_\_\_\_

Plus Wall Set Back \_\_\_\_\_ Total- **P** \_\_\_\_\_

Approach:  Level Drive Approach  % of Decline \_\_\_\_\_

% of Incline \_\_\_\_\_

Distance Between Doors- **C** \_\_\_\_\_

Clearance Above Doors- **E** \_\_\_\_\_

Required Head Room Above Side Pads- **F** \_\_\_\_\_

#### Standard Seal Information

Side Pad Length- **O** \_\_\_\_\_ Side Pad Dimensions: Face \_\_\_\_\_ Back \_\_\_\_\_

Pad Height: Front- **I** \_\_\_\_\_ Back- **J** \_\_\_\_\_ Width Front- \_\_\_\_\_ Width Back- \_\_\_\_\_

Bottom Projection of Unit- **M** \_\_\_\_\_ Top Projection of Unit- **H** \_\_\_\_\_

Bottom Draft Flaps:  3"  6"  Inside  Front  All

Mounting - Total Offset (Add Both Sides Together) = \_\_\_\_\_

Front of Seal Opening: Width \_\_\_\_\_ Height \_\_\_\_\_

Overall Outside Unit Dimensions Width- **G** \_\_\_\_\_ Height- **L** \_\_\_\_\_

Total Height of Unit From Driveway- **N** \_\_\_\_\_

**Drop Curtain Height- **K**** \_\_\_\_\_

Velcro  Adjustable Drop Curtain With Pull Ropes

Foam Front Specify \_\_\_\_\_  Weighted  Door Numbers \_\_\_\_\_

**Truck Service Range**

Min. Height \_\_\_\_\_ Max. Height \_\_\_\_\_

Min. Width \_\_\_\_\_ Max. Width \_\_\_\_\_

**NOTE:** Building Projection Past Dock Face Wall - Consult Factory

#### SPECIFY DOCK SEAL PAD TYPE & MOUNTING

Type A - Beveled Pad Flush Mount

Type B - Non-Beveled, Off-Set Mount

Type C - Non-Beveled Pad, Flush Mount

**SIDE PAD DIMENSIONS** - Width of Face \_\_\_\_\_ Width of Back \_\_\_\_\_

Customer: \_\_\_\_\_

Signature Approval By: \_\_\_\_\_

Project: \_\_\_\_\_

Address: \_\_\_\_\_

City: \_\_\_\_\_ State: \_\_\_\_\_

Architect/GC: \_\_\_\_\_

Authorized Dealer