

Series 300 "L" Pad Curtain Dock Seal

Chalfant Series 300 "L" Pad Curtain Dock Seal provides a tight seal between the building and truck at your loading dock. Designed with the variety of trucks using rear step bumpers/lift gates and various truck heights that can arrive at your dock in mind.

Standard Construction Features Summary

- The Series 300 "L" Pad Curtain Dock Seal provides a tight seal against truck and prevent weather, dust, bugs, exhaust fumes from entering building.
- High resilient premium grade polyurthane foam, bonded with high quality liquid adhesive to kiln dried wood, all are encased inside the dock seal fabric cover to protect it from abuse and the elements (optional 14 gauge galvanized steel backing also available).
- All pads are equipped with air vents to help minimize rupture, and drain holes equipped with brass grommet type drain holes to reduce moisture build-up.
- Hood style head curtain that services the wide variety of trucks at your loading dock.
- Wide variety of tested high quality fabrics available.
- One (1) year Guarantee against manufacturing defects in material & workmanship from date of installation. *(see warranty)

3-in-1 Guardian Dor-Seal System Options

- Foam backing - Conforms to building wall irregularities.
- Extra wood substructure - Strong, secure connections for installations.

General Options

- Flame-retardant fabric
- Door numbers on unit (specify in notes)
- Reinforce inside side pad wear face; 48" high 96" high
- Bottom draft flaps: 3" 6" Inside Front All
- Metal hood length: 10' 12'; Proj.: 14" 18" 24" 36"



Shown with optional 8" exposure guardian pleats

The Series 300 "L" Pad Curtain Dock Seal features a unique design that acts like a dock shelter and dock seal combined. The Series 300 provides similar projection of a dock shelter and a tight fit of a dock seal, while allowing full access to the rear of the trailer and yields under off-center truck impact, due to improper positioning at the loading dock.

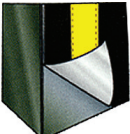
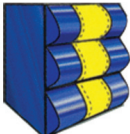

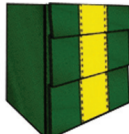
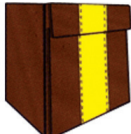
Chalfant has pioneered, developed and provided the industry with quality loading dock equipment since 1940. Safe, affordable, reliable dock equipment, to meet your application needs.

Select Base Fabric And Unit Color

- | | | | | | | |
|--------------------------------------|--------------------------------------|--|--|---|---|--|
| <input type="checkbox"/> 22 oz Vinyl | <input type="checkbox"/> 40 oz Vinyl | <input type="checkbox"/> 16 oz Hypalon | <input type="checkbox"/> 40 oz Hypalon | <input type="checkbox"/> 16 oz Neoprene | <input type="checkbox"/> 40 oz Neoprene | <input type="checkbox"/> High-Tear Resistant Guardian 60 |
| <input type="checkbox"/> Black | <input type="checkbox"/> Black | <input type="checkbox"/> Black | <input type="checkbox"/> Black | <input type="checkbox"/> Black | <input type="checkbox"/> Black | <input type="checkbox"/> Black |
| <input type="checkbox"/> Blue | <input type="checkbox"/> Blue | <input type="checkbox"/> Blue | <input type="checkbox"/> Tan | | | |
| <input type="checkbox"/> Tan | <input type="checkbox"/> Tan | <input type="checkbox"/> Green | <input type="checkbox"/> Brown | | | |
| <input type="checkbox"/> Green | <input type="checkbox"/> Brown | <input type="checkbox"/> Brown | | | | |
| <input type="checkbox"/> Brown | | | | | | |

Note: Samples of materials are available upon request, consult Chalfant for other available colors.

Select Optional Contact Face

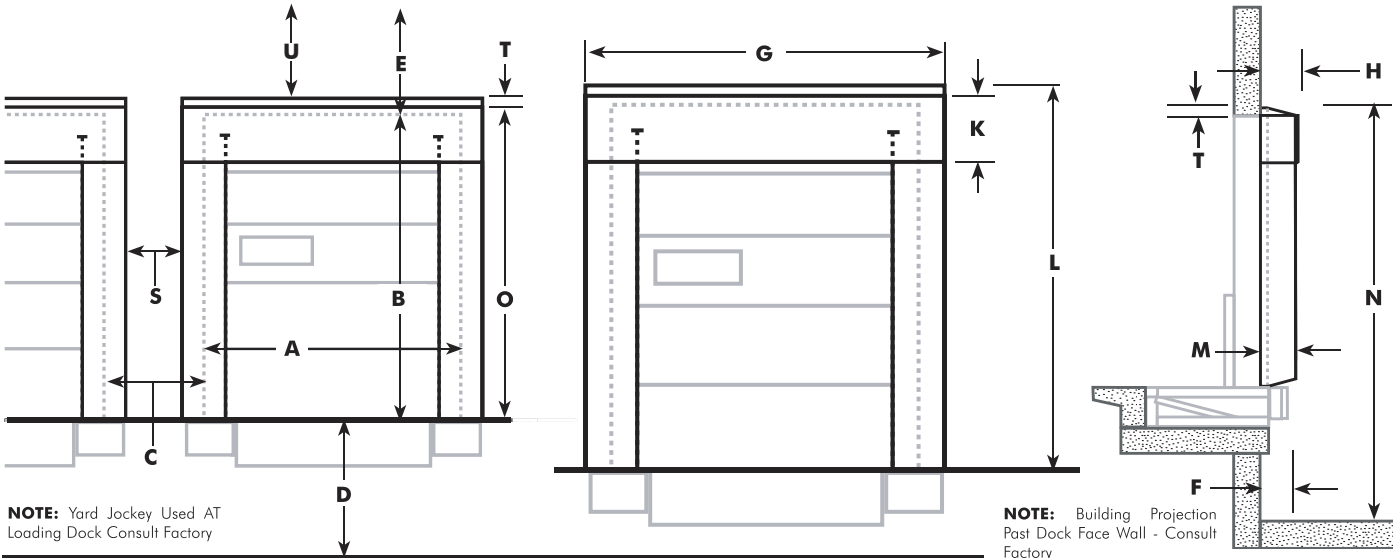
- | | | | | |
|---|---|---|--|---|
| <input type="checkbox"/> Wear Face | <input type="checkbox"/> Guardian Face | <input type="checkbox"/> Guardian Pleat GP4 | <input type="checkbox"/> Guardian Pleat GP8 | <input type="checkbox"/> Guardian Pleat GP 16 |
|  |  |  |  |  |
| | | For Heavy Use.
Exposure: 4"
Overlap: 5"
Total Length: 9" | For Medium Use.
Exposure: 8"
Overlap: 10"
Total Length: 18" | For Medium Use.
Exposure: 16.5"
Overlap: 1.5"
Total Length: 18" |

Select Contact Fabric

- 22 oz Vinyl
- 40 oz Vinyl
- 16 oz Hypalon
- 40 oz Hypalon
- 16 oz Neoprene
- 40 oz Neoprene
- High-Tear Resistant Guardian 60

Consistent with our policy of continuing product improvement, we reserve the right to change these specifications without notice or obligation.

Series 300 "L" Pad Curtain Dock Seal



General Information

Model _____ Color _____

Door Size: Width- **A** _____ Height- **B** _____

Number Of Units _____ Base Fabric _____

Contact Material _____ Contact Face Type _____

Inside Wear Face _____ Flame-Retardent Fabric

3-Ply Reinforced Top 3-Ply Reinforced Bottom

Guide Stripe: Yellow Orange Full Length Standard Length

Dock Height- **D** _____ Dock Bumper Projection _____

Plus Wall Set Back _____ Total- **F** _____

Approach: Level Drive Approach % of Decline _____
 % of Incline _____

Distance: Between Doors- **C** _____ Between Units- **S** _____

Clearance: Above Doors- **E** _____ Above Unit- **U** _____

Standard Seal Information

Side Pad Length- **O** _____ Side Pad Dimensions: Face _____ Back _____

Bottom Projection of Unit- **M** _____ Top Projection of Unit- **H** _____

Bottom Draft Flaps: 3" 6" Inside Front All

Head Curtain Required Height- **T** _____ Block-Out- _____

Front of Seal Opening: Width _____ Height _____

Overall Outside Unit Dimensions Width- **G** _____ Height- **L** _____

Total Height of Unit From Driveway- **N** _____

Drop Curtain Height- **K** _____

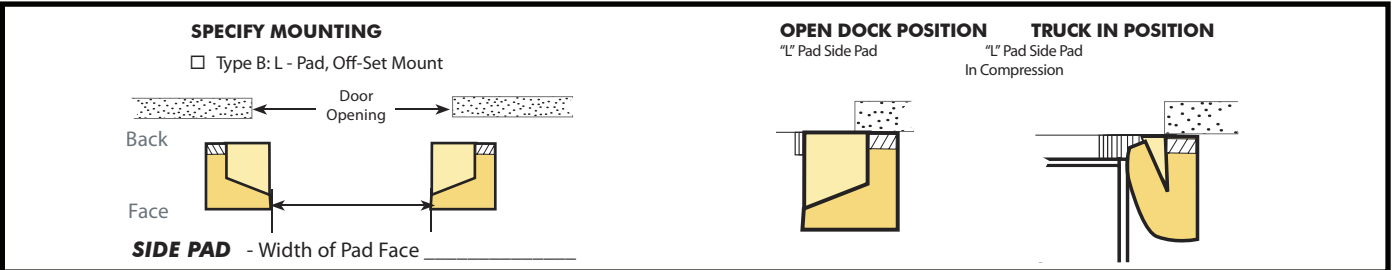
Velcro Adjustable Drop Curtain With Pull Ropes

Foam Front Specify _____ Weighted Door Numbers _____

Truck Service Range

Min. Height _____ Max. Height _____

Min. Width _____ Max. Width _____



Customer: _____

Signature Approval By: _____

Project: _____

Address: _____

City: _____ State: _____

Architect/GC: _____

Authorized Dealer